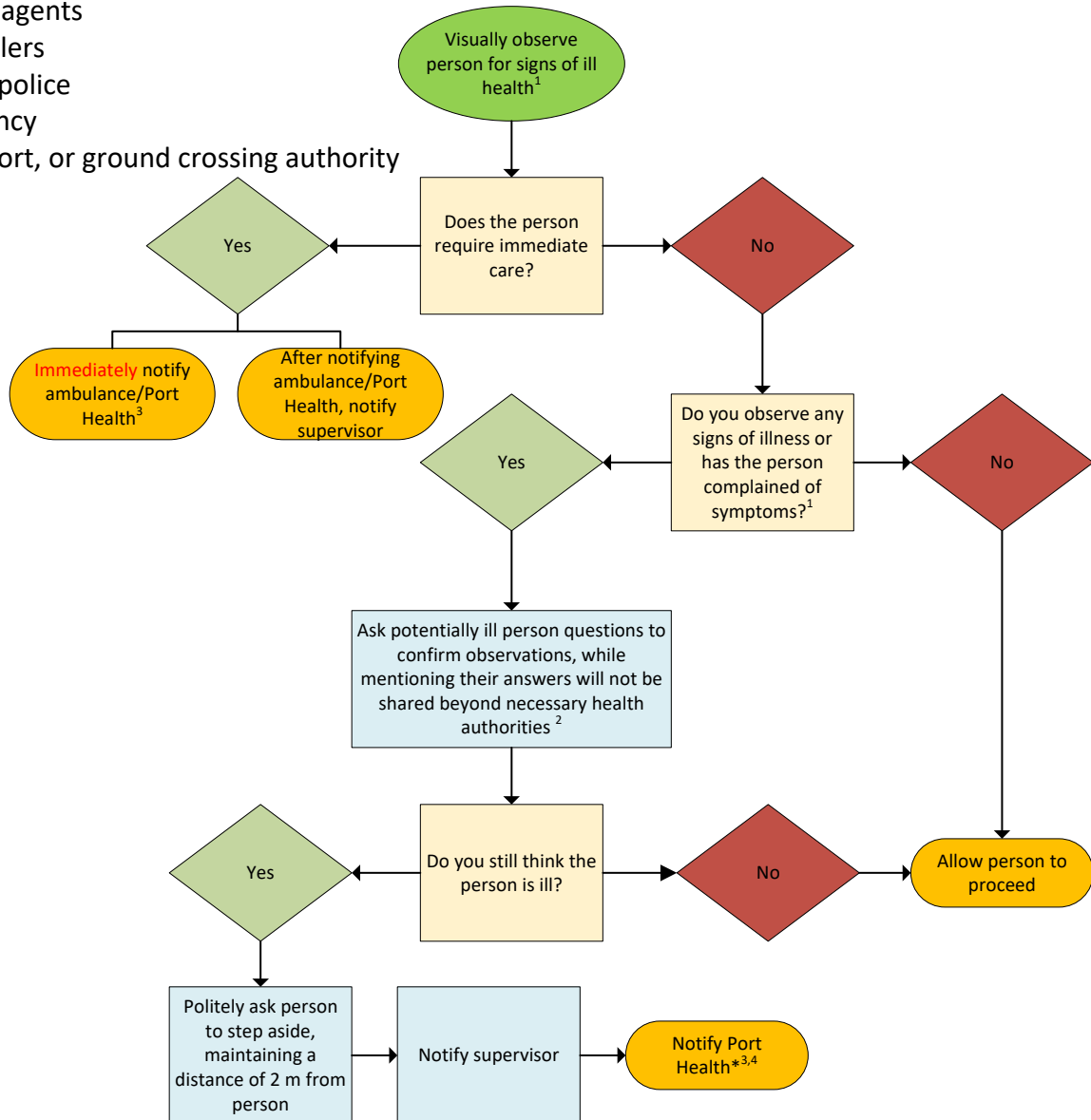


Procedure for Detection and Notification of a Suspected Ill Person at a Point of Entry (POE)

Purpose: To provide guidance for detecting signs and symptoms that may indicate a communicable disease of public health concern in persons at a POE and notifying Port Health (or a similar agency) of the potentially ill person

Target audience: Personnel in agencies in direct contact with the public, including, but not limited to:

- Customs
- Immigration
- Airlines/Ship agents
- Ground handlers
- Security and police
- Cleaning agency
- Airport, seaport, or ground crossing authority



1: Signs of Ill Health

- Temperature of 38° C or feeling feverish
- Continuous coughing
- Difficulty breathing
- Continuous diarrhea
- Continuous vomiting
- Skin rash
- New unusual bruising or bleeding (not from injury)
- Confused mental state
- Looking obviously unwell

2: Questions to Ask Potentially Ill Person

- How are you feeling?
- How long have you felt sick?
- What symptoms do you have?
- Do you have any medical conditions that account for these symptoms?
- Are these symptoms new? Have they occurred before?
- Where are you traveling from?

3: How to Contact Ambulance or Port Health

- In person
- On phone (reference contact list)
- Walkie-talkie (if available)

4: Information to Provide to Port Health

- Signs and symptoms of ill person
- Onset date of symptoms
- Additional information (optional):
 - Name and demographics
 - Travel history

* See "Procedure for Assessment for Suspected Illness of a Person at a POE and Referral to a Healthcare Facility"